





Conergy PowerPlus 250P – 275P




Module type
framed



Nominal output
250 W – 275 W


No. of cells
60


Cell type
polycrystalline


Module weight
18.2 kg


Max. permissible load ¹
6,000 Pa


Product warranty ²
12 years

Conergy PowerPlus solar modules offer premium quality that pays for itself. They guarantee high system yields and reliable operation over the entire term, and under the most demanding environmental and weather conditions. They are manufactured to the highest quality standards and are characterised by many well thought through details and characteristics that set standards in this combination.

Benefits:

- | With innovational 4-busbar technology
- | Up to 2 Wp more module output (STC)
- | High yield security thanks to linear performance guarantee for 25 years
- | Potential Induced Degradation (PID) resistant



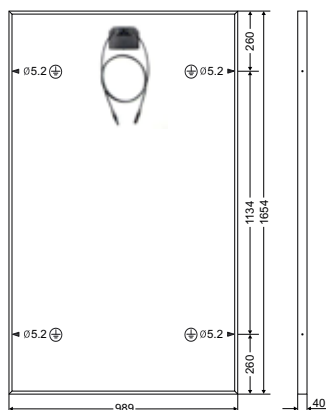
¹ In accordance with IEC 61215 Ed.2

² According to the current warranty conditions of Conergy Deutschland GmbH

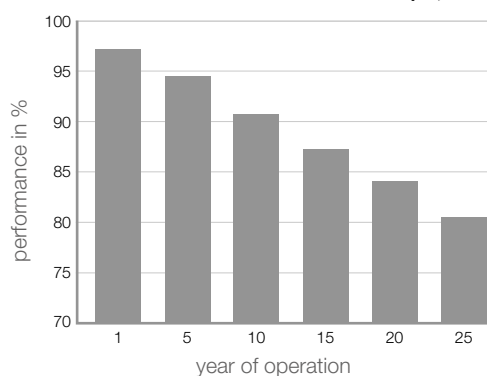
Conergy PowerPlus 250P – 275P

Mechanical specifications and additional data

Module dimensions (L × W × H) ³	1.654 × 989 × 40 mm
Cell dimensions	156 × 156 mm
Number of cells	60
Cell type	Polycrystalline cell, 4-busbar technology
NOCT ⁴	46° C ± 2° C
Max. permissible load ⁵	6,000 Pa
Front cover type	Micro-structured solar glass, 3.2 mm thick
Junction box	ZJRH Renhesolar GF 20 (IP 67), 90 × 77 × 16 mm
Bypass-diode	3 pieces, type PST4020
Cable	2 × 1.000 mm length, 4 mm ² cross-section
Plug type	ZJRH Renhesolar 05-6 (MC4 combinable)
Frame material	Aluminum, silver anodized
Module weight	18.2 kg
Certification	IEC/EN 61215 Ed. 2, IEC/EN 61730, ISO 9001:2008, ISO14001:2004, OHSAS 18001
Product warranty ⁶	12 years
Performance warranty ⁶	Linear performance warranty year 1: >97.5 % of nominal power year 25: >80.7 % of nominal power
Max. permissible system voltage	1,000 V
Reverse current loadability (IR)	20 A



**Linear performance warranty
for solar modules of the PowerPlus series (–0,7%/year)**



³ Dimensional tolerance: +/–1 mm

⁴ Nominal operating temperature of the cell at 800 W/m² irradiation, 20°C ambient temperature, wind speed of 1 m/s

⁵ In accordance with IEC 61215 Ed. 2

⁶ According to the current warranty conditions of Conergy Deutschland GmbH

Electrical ratings under standard test conditions ^{7, 8}						
Conergy PowerPlus	250P	255P	260P	265P	270P	275P
Maximum power (P_{MPP})	≥250Wp	≥255Wp	≥260Wp	≥265Wp	≥270Wp	≥275Wp
Power sorting	-0%/+3%	-0%/+3%	-0%/+3%	-0%/+3%	-0%/+3%	-0%/+3%
Module efficiency	15.3%	15.6%	15.9%	16.2%	16.5%	16.8%
Maximum power voltage (V_{MPP})	30.29V	30.54V	30.79V	31.04V	31.29V	31.54V
Maximum power current (I_{MPP})	8.33A	8.42A	8.52A	8.61A	8.70A	8.80A
Open circuit voltage (V_{OC})	36.91V	37.18V	37.45V	37.72V	37.99V	38.26V
Short circuit current (I_{SC})	8.80A	8.89A	8.98A	9.06A	9.15A	9.23A
Temperature coefficient of (P_{MPP}), in percent	-0.42%/°C	-0.42%/°C	-0.42%/°C	-0.42%/°C	-0.42%/°C	-0.42%/°C
Temperature coefficient of (V_{OC}), absolute	-0.118V/°C	-0.119V/°C	-0.120V/°C	-0.121V/°C	-0.122V/°C	-0.122V/°C
Temperature coefficient of (V_{OC}), in percent	-0.32%/°C	-0.32%/°C	-0.32%/°C	-0.32%/°C	-0.32%/°C	-0.32%/°C
Temperature coefficient of (I_{SC}), absolute	3.87mA/°C	3.91mA/°C	3.95mA/°C	3.99mA/°C	4.03mA/°C	4.06mA/°C
Temperature coefficient of (I_{SC}), in percent	0.044%/°C	0.044%/°C	0.044%/°C	0.044%/°C	0.044%/°C	0.044%/°C

Electrical ratings at 800 W/m ² , NOCT und AM 1,5 ⁸						
Conergy PowerPlus	250P	255P	260P	265P	270P	275P
Maximum power (P_{MPP})	186.5W	190.2W	193.9W	197.6W	201.4W	205.2W
Open circuit voltage (V_{OC})	33.97V	34.22V	34.47V	34.72V	34.96V	35.21V
Short circuit current (I_{SC})	7.11A	7.18A	7.25A	7.32A	7.39A	7.45A
Maximum power voltage (V_{MPP})	27.70V	27.93V	28.16V	28.39V	28.61V	28.84V
Maximum power current (I_{MPP})	6.73A	6.81A	6.89A	6.96A	7.04A	7.11A

⁷ Standard test conditions that are defined as follows: 1.000 W/m² irradiation at a spectral density of AM 1.5 and a cell temperature of 25° C

⁸ Measuring uncertainty (P_{MPP}): +/-3 %, Tolerance for V_{OC} , I_{SC} , V_{MPP} and I_{MPP} : +/-10 %

Conergy Deutschland GmbH
Kaufmannshaus
Bleichenbrücke 10
20354 Hamburg
Germany

Telefon +49 (0)40 236 20 80
E-Mail info@conergy.de

Available at: